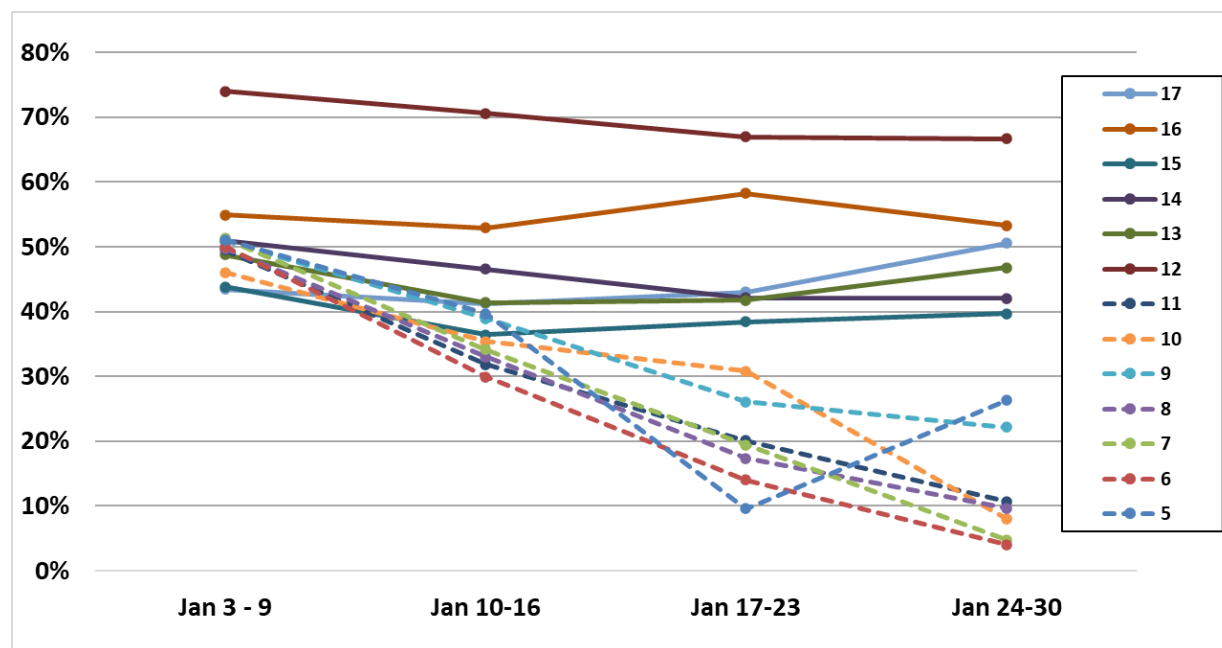
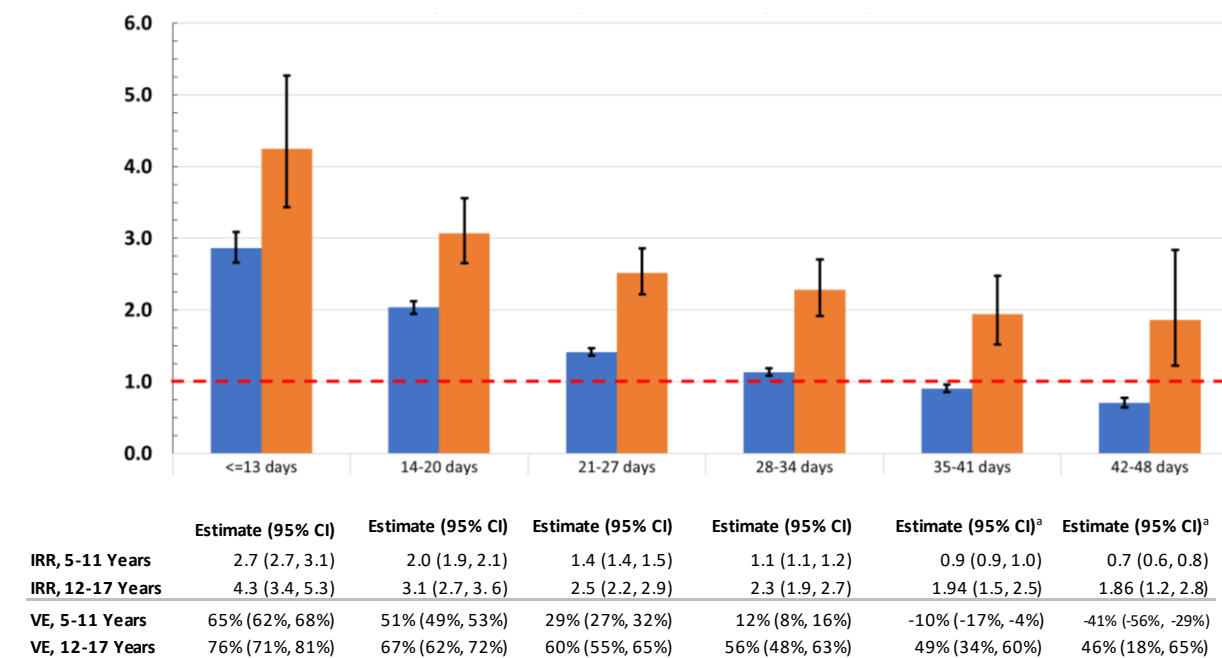


**Figure 1: Vaccine Effectiveness against Infection, by Week and Year of Age**



**Figure 2: Incidence rate ratios, comparing cases during January 3 - January 30, 2022 for unvaccinated versus children newly fully-vaccinated December 13, 2021-January 2, 2022, by Time Since Full Vaccination**



<sup>a</sup> Negative VE values observed in later timepoints likely reflect estimator instability and/or residual confounding, as opposed to true relatively-increased risk for those vaccinated.